

Admissions

The IMPRS-SPCE admits up to eight students a year. They must have a proven record of academic excellence and hold a master's degree or the equivalent in a discipline relevant to the School's research. The ability to do scholarly work in English is a prerequisite for admission. We welcome students from Germany and abroad.

In consultation with their advisor, students submit their doctoral thesis, in English or German, to the Faculty of Management, Economics and Social Sciences at the University of Cologne or the Faculty of Social Sciences at the University of Duisburg-Essen.

Applications are accepted from December 1 to February 15. Shortlisted applicants will be invited for an interview. Notification of acceptance is in May, and the program begins in October.

See imprs.mpifg.de for more information about the program, eligibility, and online application.

Financial and organizational support

Our goal is to create excellent conditions for every doctoral researcher working within the framework of the IMPRS-SPCE. Although slightly different legal conditions apply to the three cooperating institutions (the remuneration structures of the federal government to the MPIfG, those of the state of North Rhine-Westphalia to the universities), all newly recruited PhD students will receive a 65 percent public service contract in the current hiring period. For further information please refer to our website imprs.mpifg.de (Application, Financial Support).

No tuition is charged for the doctoral program, but students must enroll at the University of Cologne or the University of Duisburg-Essen for a small fee. IMPRS-SPCE students have fully equipped office space and enjoy full access to the libraries and research facilities of the MPIfG and the respective faculties of the universities of Cologne and Duisburg-Essen. Additional funds for fieldwork trips, stays at partner universities, and conference travel are available.

Faculty

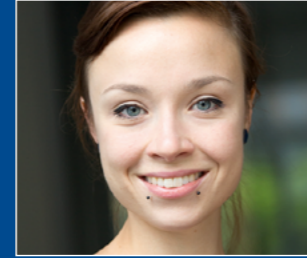
The faculty is made up of professors from the Max Planck Institute for the Study of Societies, the Faculty of Management, Economics and Social Sciences at the University of Cologne, and the Faculty of Social Sciences at the University of Duisburg-Essen.

- Lucio Baccaro (Political Economy)
- Jens Beckert (Sociology)
- Achim Goerres (Political Science)
- Martin Höpner (Political Science)
- André Kaiser (Political Science)
- Clemens Kroneberg (Sociology)
- Sigrid Quack (Sociology)
- Karen Shire (Sociology)
- Christine Trampusch (Political Science)
- Till van Treeck (Socioeconomics)

Affiliate members:

- Olivier Godechot (Sociology)
- Isabell Stamm (Sociology)
- Leon Wansleben (Sociology)

People



Being part of the IMPRS-SPCE has given me the chance to interact with researchers from different cultural as well as disciplinary backgrounds and to expand my theoretical and methodological skill set; it has also provided me with ample resources and invaluable administrative support to conduct my own research. Dissertation projects in economic sociology or in political economy can very much flourish in this open and supportive research environment.

Laura Einhorn, Germany



The Cotutelle between the IMPRS-SPCE and MaxPo, situated at Sciences Po in Paris, gave me the opportunity to be part of two highly renowned research centers in the social sciences. The program enriched my dissertation project and personal development in many ways. It provided me with valuable insights from the distinct French and German research traditions and helped me to develop an interdisciplinary approach to research.

Andreas Eisl, Austria



The IMPRS-SPCE, situated at the very heart of Europe, is the perfect place to pursue a doctoral project. The small size of the School allows lively interaction between researchers and enables continuous direct exchange with your advisor. A semester abroad at the European University Institute in Florence and multiple international conferences and training schools were key to the development of my academic research and career.

Donato Di Carlo, Italy



The lively research community and regular academic events provided me with plenty of opportunities to share my own work and research interests with top scholars from all over the world and to benefit greatly from their insights and experience. The warmth and friendliness of the people working at the IMPRS-SPCE really made the experience of writing a dissertation a task that, even with its ups and downs, I enjoyed every day!

Guadalupe Moreno, Argentina

Contact

Cologne

Cologne is a major German city on the Rhine and host to 100,000 students from all over the world. Known for its hospitality, Cologne offers a vibrant cultural scene, historic treasures, and a wealth of leisure activities. It is a European rail and airline hub with easy access to Berlin, Düsseldorf, Frankfurt, Amsterdam, London, and Paris. All new IMPRS-SPCE students work at the MPIfG in Cologne for up to twelve months. After this period, students with advisors at the University of Cologne or the University of Duisburg-Essen move to their advisor's institution.

The School

IMPRS-SPCE

Max Planck Institute for the Study of Societies
Paulstr. 3, 50676 Köln, Germany
Phone +49 221 2767-0
imprs@mpifg.de
imprs.mpifg.de



IMPRS-SPCE Chair

Prof. Dr. Lucio Baccaro

IMPRS Coordinator

Dr. Gudrun Löhner

Please direct all inquiries to the IMPRS Coordinator via email to imprs@mpifg.de.



INTERNATIONAL MAX PLANCK RESEARCH SCHOOL
on the Social and Political Constitution of the Economy

Doctoral Program in Cologne

at the Max Planck Institute for the Study of Societies,
the University of Cologne and the University of Duisburg-Essen



economic sociology

comparative and
international political economy

imprs.mpifg.de

Welcome

Dear Prospective Student,

Thank you for your interest in the International Max Planck Research School on the Social and Political Constitution of the Economy (IMPRS-SPCE). If you are highly motivated and have an excellent academic record, the Max Planck Institute for the Study of Societies, the Faculty of Management, Economics and Social Sciences at the University of Cologne, and the Faculty of Social Sciences at the University of Duisburg-Essen invite you to consider this international doctoral program aimed at students from all over the world.

The IMPRS-SPCE provides a supportive and intellectually stimulating environment for research-oriented doctoral students who wish to excel in their academic careers by writing an outstanding dissertation. Established in 2007 as the first program of its kind in the fields of economic sociology and political economy in Germany, it offers an unparalleled curriculum including intensive training in research design and methods of empirical research. An international exchange program enhances the academic experience and gives junior researchers the opportunity to benefit from meeting and working with distinguished scholars in their fields.

Graduates from the program have won prestigious awards such as the German Thesis Award and the Otto Hahn Medal. The IMPRS-SPCE prepares its graduates for careers in academia. While many alumni successfully pursue careers at universities, some also go on to work in the private sector, government, associations, and international organizations. To find out more about this opportunity to begin your career in a vibrant international research environment, please visit imprs.mpifg.de.

We look forward to hearing from you.



Lucio Baccaro

Chair of the International Max Planck Research School on the Social and Political Constitution of the Economy (IMPRS-SPCE)

Director at the Max Planck Institute for the Study of Societies, Cologne

Focus of Research

The International Max Planck Research School on the Social and Political Constitution of the Economy is an international doctoral program offered jointly by the Max Planck Institute for the Study of Societies, the Faculty of Management, Economics and Social Sciences at the University of Cologne, and the Faculty of Social Sciences at the University of Duisburg-Essen.

Research at the IMPRS-SPCE investigates the interdependence of the economy and society, a core topic in both sociology and political science. The School undertakes to relate these two traditions systematically in an effort to exploit and enhance their synergies.

In sociology, the study of the social embeddedness of economic action is at the center of the “New Economic Sociology.” Sociology has thus reclaimed territory it had long abandoned to economics. The focus of the new economic sociology is on the investigation of the functioning of markets. While economic sociology tends to emphasize the contribution of social structures to the facilitation and direction of economic action, political scientists have studied the role of formal institutions and political processes in shaping economic outcomes. In particular, political economists have focused on the socioeconomic underpinnings of capitalist variation. This literature originates from the institutional economics of the early twentieth century and includes the study of organized capitalism in the 1960s, neo-corporatism in the 1970s and subsequent decades, and Varieties of Capitalism from the 2000s on. Its latest offshoot is the current work on different “growth models.”

Bringing economic sociology and political economy into dialogue, work at the School pursues an empirical-analytical approach rather than an efficiency-prescriptive approach. Understanding and explaining how economic behavior is influenced by its social, political, and institutional context and vice versa takes precedence over finding optimally efficient solutions to economic problems. The program’s research tries to understand how economies evolve in the real world, rather than determining how they should, or would, evolve in an ideal world.

Doctoral Program

The program offers doctoral degrees in sociology and political science. The first year is devoted to expanding students’ methodological skills and firming up their theoretical background in economic sociology and comparative and international political economy. Students undergo intensive training in research design and methods and participate in a biweekly doctoral colloquium. During this period, they also develop and defend their research proposal. The second part of the program comprises 27 months during which students concentrate on researching and writing their thesis. They are

encouraged to spend four months at one of the partner universities in France, Italy, or the United States. IMPRS-SPCE contracts or scholarships are awarded to enable doctoral students to complete first-rate doctoral theses during their time at the IMPRS-SPCE. If the presentation of interim results at an academic conference helps to achieve this aim, the IMPRS-SPCE will support it. The Max Planck Summer Conference on Economy and Society, at which many students present their work in progress to peers and leading scholars in their fields, offers such an opportunity.

The IMPRS-SPCE offers ...

- a research-oriented curriculum for exceptionally qualified graduate students
- excellent research facilities
- close collaboration with advisors
- a fixed-term contract or scholarship (up to 42 months)
- English as a working language
- a stimulating intellectual environment within an international research community
- further funds for stays abroad, fieldwork, conference trips, or transcription costs
- a six-month wrap-up postdoc period upon successful completion of the program allowing additional time for publishing or teaching
- an international learning and working experience in a major city in the heart of Western Europe

Special features

- Exchange stay at a partner institution
- Participation in Summer Conference

Courses

Core courses

- Economy and Society I
- Economy and Society II
- Logic of Research: either Logic of Social Inquiry or Research Design in Comparative Social Research

Research methods

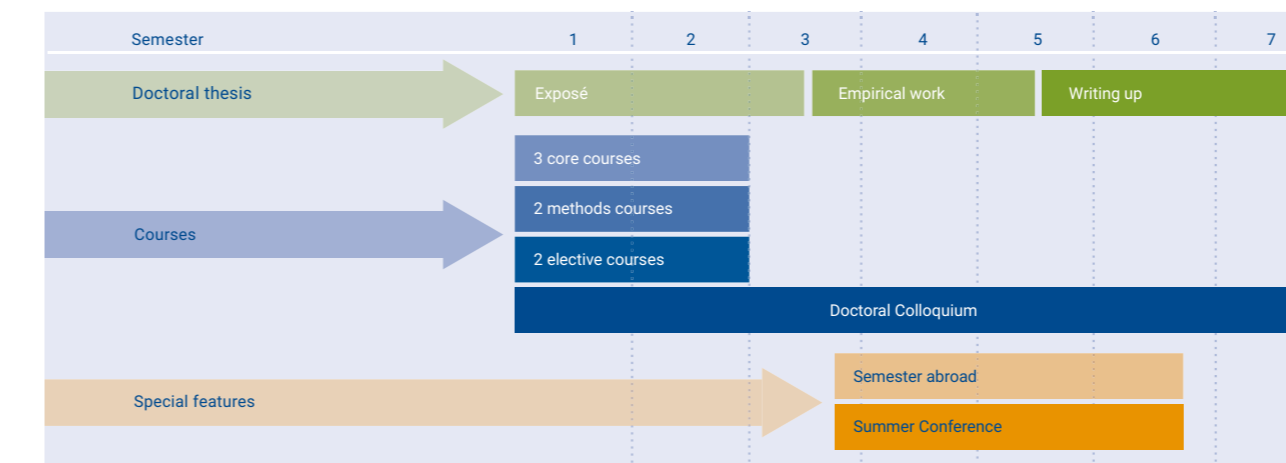
- Topics depending on individual needs, for example: qualitative interviews; case study methods; Grounded Theory; regression analysis; quantitative text analysis; time-series–cross-section analysis; survey experiments

Elective courses

For example:

- Case Study Methods in Comparative Political Economy
- Comparative Political Economy
- Comparative Political Institutions
- Institutional Analysis of Organizations
- Political Economy of European Integration
- Sociology of Markets
- Transnational Governance

Curriculum



International Exchange Program

International cooperation is crucial given the transnational character of research in economic sociology and comparative and international political economy. Our doctoral program gives students the opportunity to spend four months at a North American or European partner institution or another academic institution abroad in order to gain

international experience and develop their work in an international context. The IMPRS-SPCE also hosts doctoral students from abroad, which expands its own students’ intercultural skills and professional networks. Public lectures by internationally renowned scholars enhance the program.

Cotutelle

The Cotutelle in the Social and Political Constitution of the Economy is a Franco-German doctoral program offered jointly by Sciences Po, Paris, and the IMPRS-SPCE which enables students from both institutions to pursue a German and a French doctoral degree

simultaneously (cotutelle de thèse). Degrees are granted in sociology or political science. Doctoral research projects are limited to the research fields of economic sociology and political economy.

Partner institutions

United States

Columbia University
Department of Sociology

Northwestern University
Department of Political Science
Department of Sociology

University of California, San Diego
Department of Sociology

Europe

Copenhagen Business School

European University Institute
Department of Political and Social Sciences

Sciences Po, Paris
Centre d’études européennes
Centre de sociologie des organisations

